



Differential



200 L / MIN



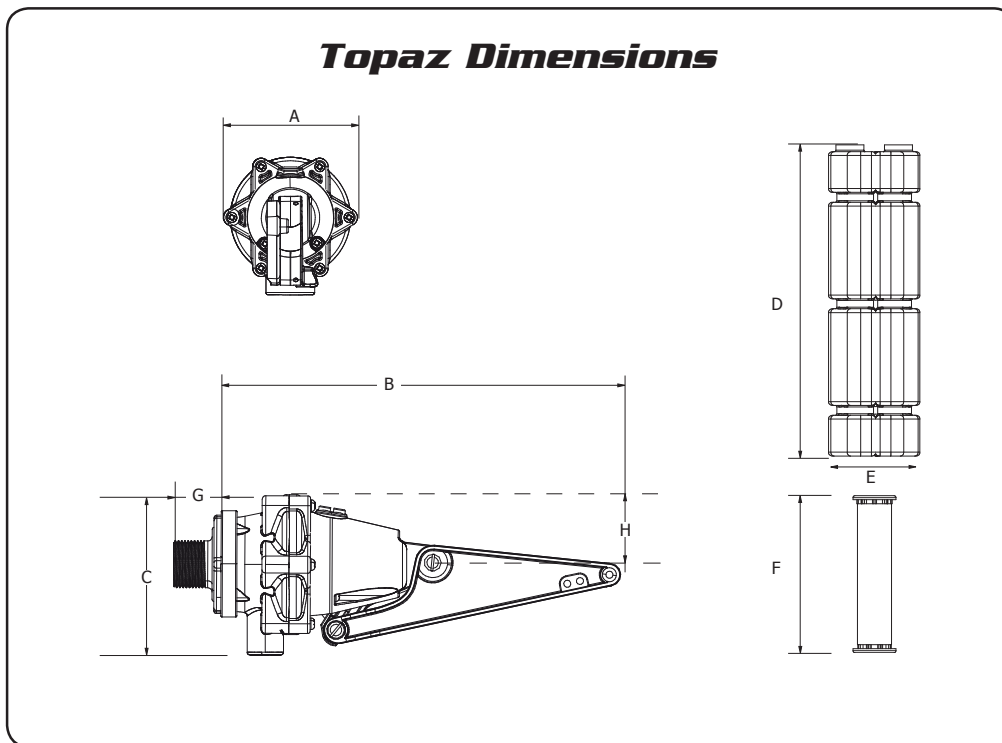
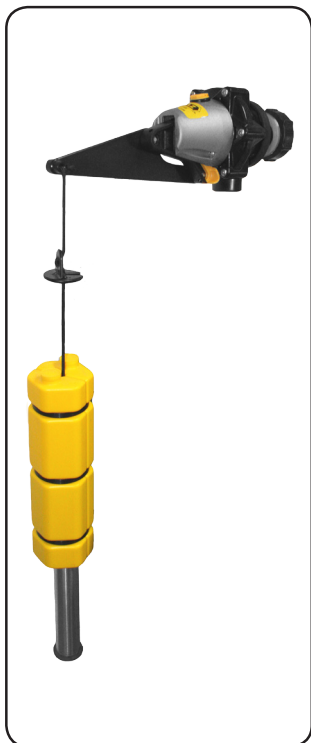
TOPAZ DIFFERENTIAL

DIMENSIONS & MATERIALS



Differential

200 L / MIN



Topaz Dimensions		
	mm	inches
A	88	3 1/2
B	227	8 15/16
C	90	3 17/32
D	208	8 3/16
E	62	2 7/16
F	132	5 3/16
G	15mm (1/2") Long Tail	100
	20mm (3/4") Long Tail	46
	25mm (1") Long Tail	62
	32mm (1 1/4") Long Tail	67
H	35	1 3/8

Materials	
Valve Body	Glass Filled Nylon
Yellow & White Internal Parts	Acetal
Filter	Acetal
Diaphragm	EPDM
Seal	Urethane
Springs, Bolts, Nuts, Pin, Screws	304 Stainless Steel
Detach Seal	Santoprene
O'Rings	Nitrile
Float	HDPE
Float Cord	Polyester

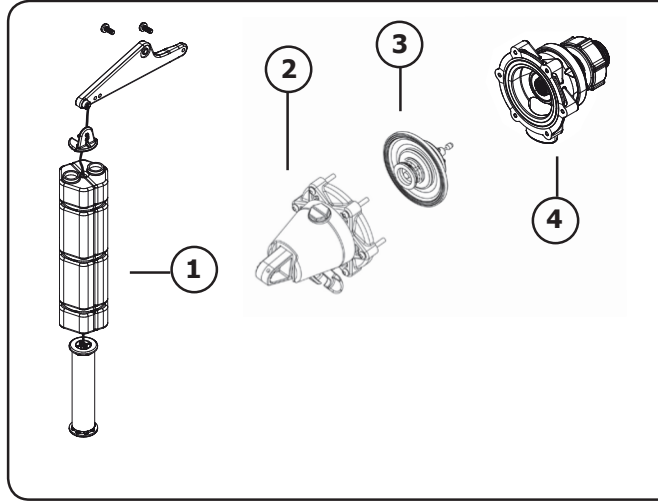
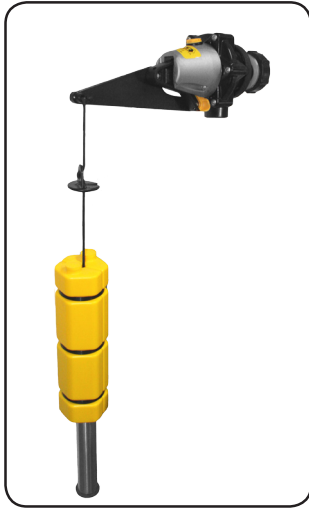
Maximum Temperature of Operation 60°C, 140°F
 NB: High Temperature models on request.

TOPAZ DIFFERENTIAL

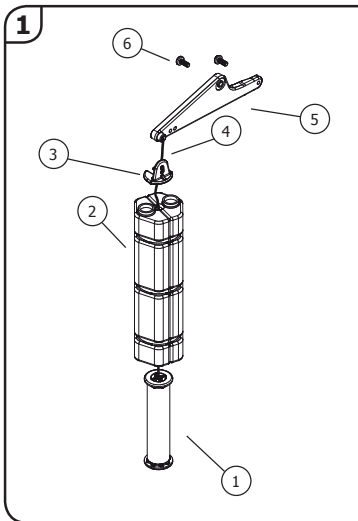
PARTS IDENTIFICATION SHEET



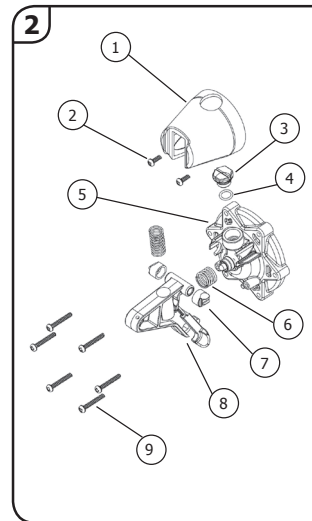
Differential



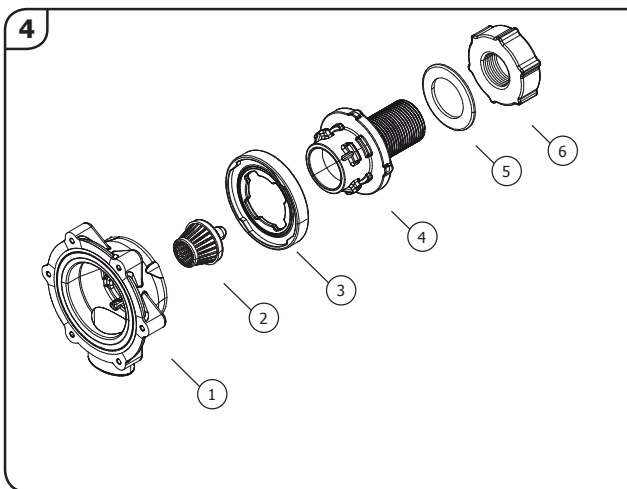
CODE	DESCRIPTION
1	TPPD1 Float, Arm & Weight Assembly
2	TPPD21 Cap & Actuator Assembly
3	TPP3 Diaphragm Assembly
4	Detach Base Assembly



CODE	DESCRIPTION
1	TPPD1010 Weighted Tube Stop
2	TPPD1040 Weighted Float
3	TPPD1030 Upper Float Stop
4	TPPD1020 Cord
5	TPPD1050 Arm Extension
6	TPP1040 M5 x 12 Bolt



CODE	DESCRIPTION
1	TPPD2011 Actuator Cap
2	TPP2020 6g x 10 S/S Screw
3	TPP2030 Frost Pro Plug
4	TPP2040 Frost Pro O'ring
5	TPP2050 Valve Cap Assembly
6	TPPD2061 Damping Spring
7	TPP2080 Bearings (set of two)
8	TPP2090 Actuator Arm
9	TPP2100 6g x 25 S/S Screw



CODE	DESCRIPTION
1	TPP4A010 Detach Base
2	TPP4A030 Detach Filter
3	TPP4A020 Detach Seal
4	TPP4A0410 Detach Tail 15mm (1/2") Long
	TPP4A0420 Detach Tail 20mm (3/4") Long
	TPP4A0431 Detach Tail 25mm (1") Long
	TPP4A0432 Detach Tail 1" NPT Long
	TPP4A0441 Detach Tail 32mm (1 1/4") Long
	TPP4A0442 Detach Tail 1 1/4" NPT Long
5	TPP4A050 Seal Washer 15mm (1/2")
	TPP4A051 Seal Washer 20mm (3/4")
	TPP4A052 Seal Washer 25mm (1")
	TPP4A053 Seal Washer 32mm (1 1/4")
	TPP4A054 Backing Washer 32mm (1 1/4")
6	TPP4A060 Backnut 15mm (1/2")
	TPP4A061 Backnut 20mm (3/4")
	TPP4A062 Backnut 25mm (1")
	TPP4A063 Backnut 32mm (1 1/4")

200 L / MIN

TOPAZ DIFFERENTIAL

PRODUCT INFO



Differential

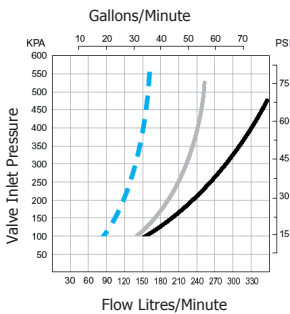
Description

Topaz Differential valves are ideal for use in water tanks which are filled by a pressure system controlled water pump. The valve gives a level difference which is adjustable from 50mm up to 2.5m to minimise starting and stopping of the pumping system.

Applications

- Maintaining Water Levels in:
- Water Storage Tanks
 - Water Cisterns
 - Irrigation Applications

Flow Graph



- Key**
- 15mm (1/2")
 - 20mm (3/4")
 - 25mm & 32mm (1" & 1 1/4")



Principle of Operation

- The valve mounts at the top of the tank. It fits easily through a thin walled tank or screws into a threaded tank inlet.
- As the tank empties the weighted float travels down the cord until it hits the bottom stop. The valve then opens immediately to give a full flow.
- The valve now runs constantly and the weighted float rises until it hits the upper float stop. This lifts the arm and the valve shuts down.
- Observe the pressure that your pump runs at while the tank is filling. Set the pressure switch to turn the pump off at a pressure at least one bar above the running pressure.

Pressure Range
1 Bar – 10 Bar
(15psi-150 psi)

Features

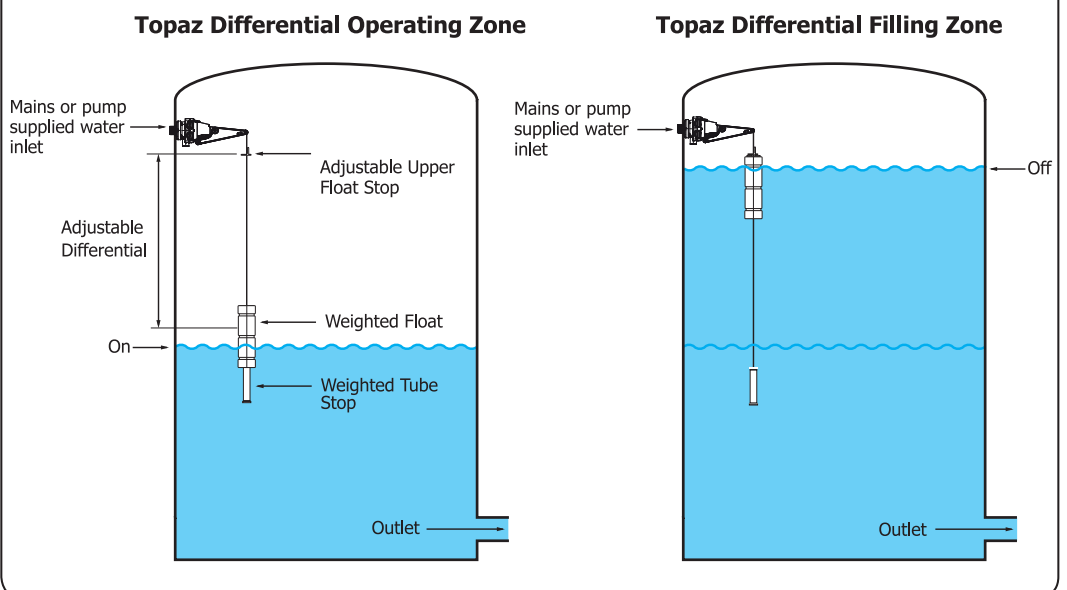
- High flow
- Start and stop levels can be easily adjusted to give water level differentials from 50mm to 2.5 m
- Keeps pump operation to a minimum.
- Detach™ Valve Seal Access System for quick access to valve seal (Patented)
- Ideal for all makes and models of tanks.

Available Inlet Sizes

- 15mm (1/2")
- 20mm (3/4")
- 25mm (1")
- 32mm (1 1/4")

All supplied in Detach long tail thread with back nut

Typical Installation



200 L / MIN