

TOPAZ COMPACT VALVE

PRODUCT INFO



Description

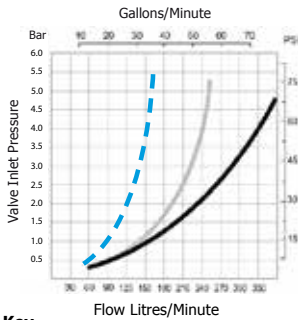
Topaz compact float valves are float operated valves for use in the automatic filling of water troughs, tanks & cisterns where space is limited. The valve is configured for above water mounting only. The compact weighted float operates a small pilot valve which in turn operates the main diaphragm valve. Topaz Compact float valves are positive on/off and are ideal when working with pump supplied water in a small compartment.

Applications

Maintaining Water Levels in:

- Animal Drinking Troughs
- Water Storage Tanks
- Water Cisterns
- Air Conditioning Systems
- High Pressure Cleaning Systems
- Irrigation Applications

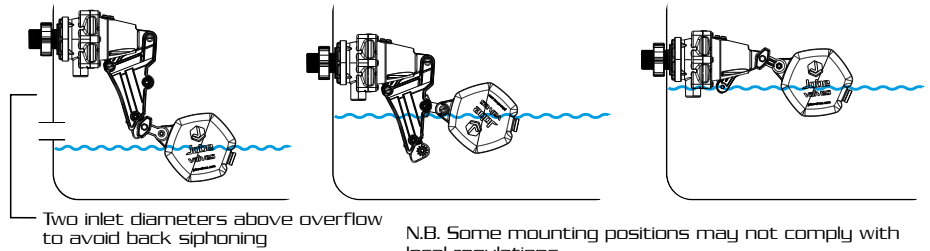
Flow Graph




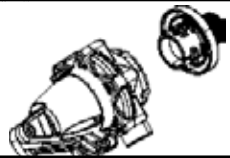

Features

- Compact Weighted Float
- High flow
- Compact robust construction
- Made from corrosion resistant materials
- Shuts down slowly to minimise water hammer
- 20 - 60mm (3/4" - 2 1/2") water level differential (increases as water inlet pressure increases)
- Pressure rating 0.3 - 10 Bar (5 - 150 PSI)
- Float position easily adjustable with no tools
- Valve has switch to lock it in off position
- Has port to connect Frostpro anti freeze device
- Detach™ Valve Seal Access System for quick access to valve seal

Mounting Positions



Options

| | BSP | | | | NPT | | | |  Specifies this Thread size |
|---|------|------|----|--------|------|------|----|--------|--|
| | 1/2" | 3/4" | 1" | 1 1/4" | 1/2" | 3/4" | 1" | 1 1/4" | |
| Inlet Size | ✓ | ✓ | ✓ | ✓ | ✓ | ✓ | ✓ | ✓ |  Detach |
| Detach Base Short Tail | | ✓ | ✓ | ✓ | | ✓ | ✓ | ✓ | |
| Detach Base Long Tail | ✓ | ✓ | ✓ | ✓ | ✓ | ✓ | ✓ | ✓ | |
| Long Tail: Supplied with backnut and seal washer. | | | | | | | | | |
| Floats: 55mm wide float supplied standard. N.B. (No other float is compatible with this valve) | | | | | | | | | |
|  Compact Float 55mm | | | | | | | | | |

TOPAZ TROUGH VALVE SPECIFICATION

| PRODUCT | CODE | INLET SIZE | CODE | OPTIONS | CODE |
|--|------|--------------|------|------------------|------|
| Topaz Compact Float Valve | TPVC | 1/2" bsp/npt | 15 | Detach Base | D |
| | | 3/4" bsp/npt | 20 | Long Tail Thread | LT |
| | | 1" bsp | 25 | | |
| | | 1" npt | 1 | | |
| | | 1 1/4" bsp | 32 | | |
| | | 1 1/4" npt | 114 | | |
| NOTE: If no options are specified the standard ones will be supplied | | | | | |

Note: Product may differ slightly from these specs due to ongoing product development.

200 L / MIN

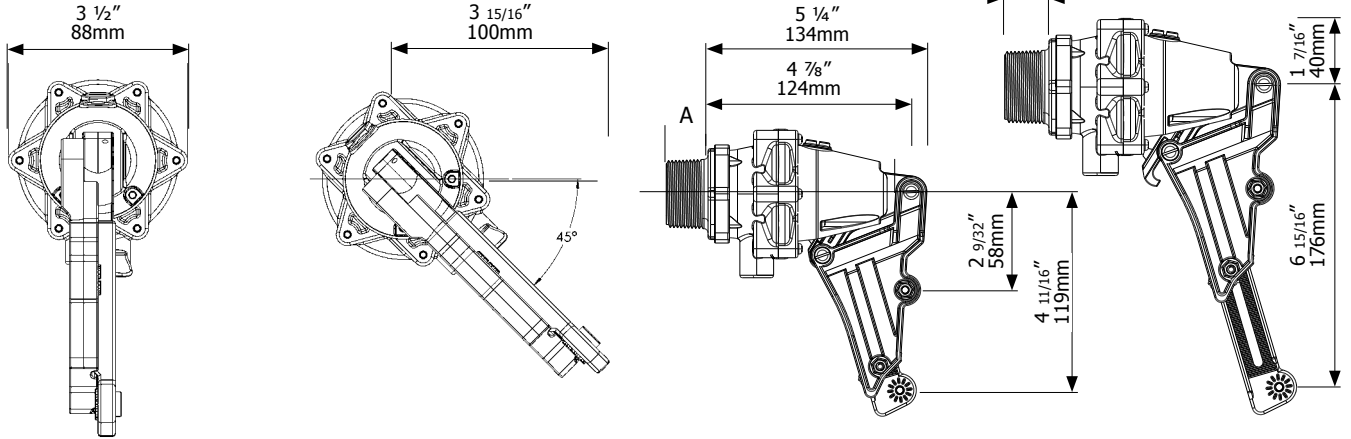
TOPAZ COMPACT VALVE

DIMENSIONS & MATERIALS

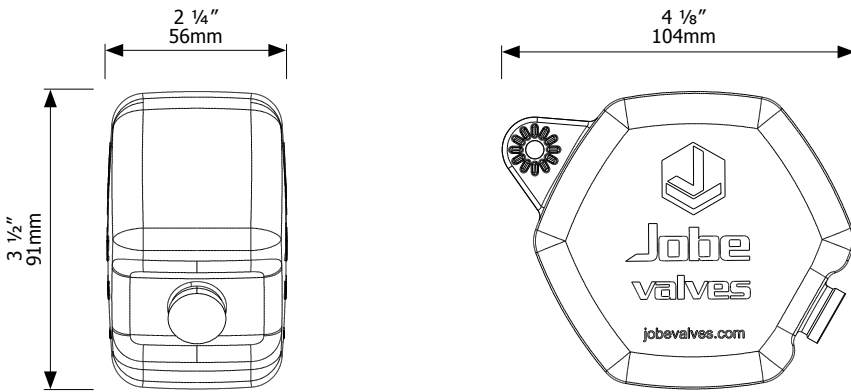


200 L / MIN

Topaz Dimensions



Float Dimensions



Tail Dimensions

| Dimension A | mm | inches |
|----------------------------------|-----|--------|
| 20mm (3/4") Short tail | 22 | 7/8 |
| 25mm (1") bsp/npt short tail | 22 | 7/8 |
| 32mm (1 1/4") bsp/npt short tail | 25 | 1 |
| 15mm (1/2") long tail | 100 | 4 |
| 20mm (3/4") long tail | 38 | 1 1/2 |
| 25mm (1") bsp/npt long tail | 54 | 2 1/8 |
| 32mm (1 1/4") bsp/npt long tail | 60 | 2 3/8 |

| Part | Material | Part | Material |
|--|--------------------|--|---------------------|
| Valve Body & Tail | Glass Filled Nylon | Springs, Bolts, Nuts, Pin, Screws | 304 Stainless Steel |
| White & Yellow Internal Parts | Acetal | O'Rings | Nitrile |
| Filter | PP/Nylon | Float | HDPE |
| Diaphragm | EPDM | Actuator / Arms & Caps | ABS |
| Seal | Urethane | | |
| Float Cord | Polyester | | |

Maximum Operating Temperature

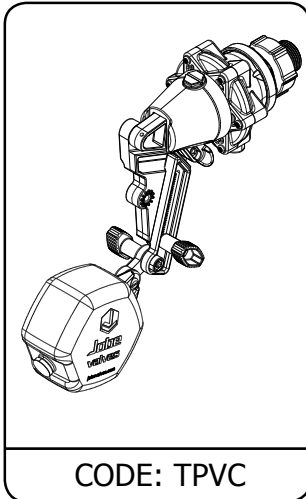
60°C, 140°F

TOPAZ COMPACT FLOAT VALVE

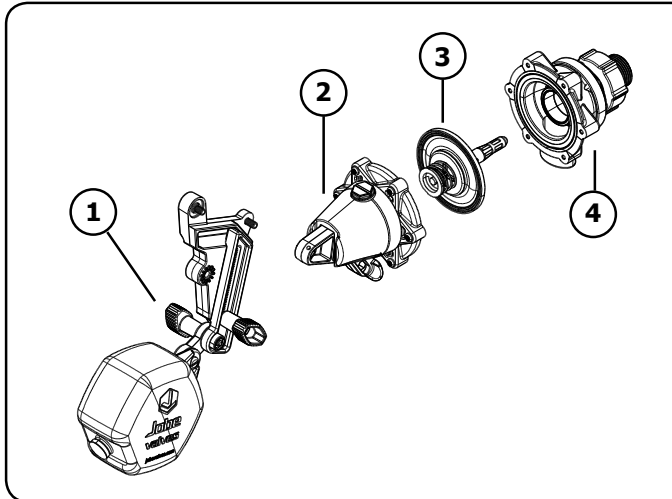
PARTS IDENTIFICATION SHEET



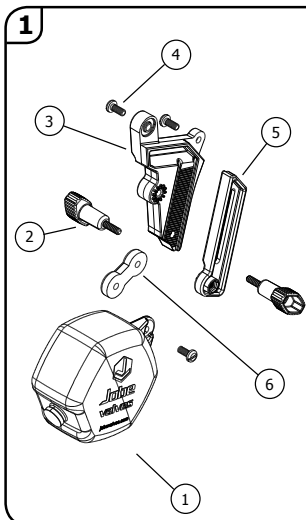
200 L / MIN



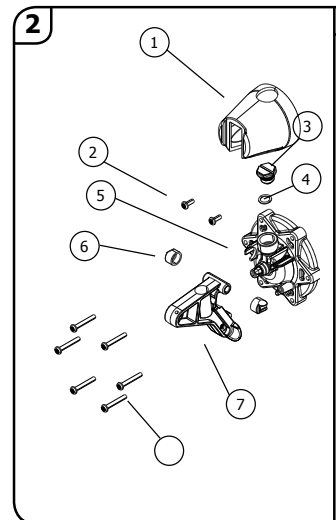
CODE: TPVC



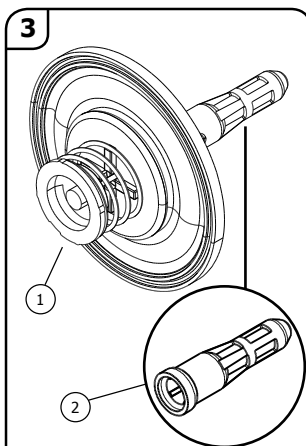
| CODE | DESCRIPTION |
|------|-------------------------------|
| 1 | Float Assembly |
| 2 | TPPC2 Cap & Actuator Assembly |
| 3 | TPP3 Diaphragm Assembly |
| 4 | Detach Base Assembly |



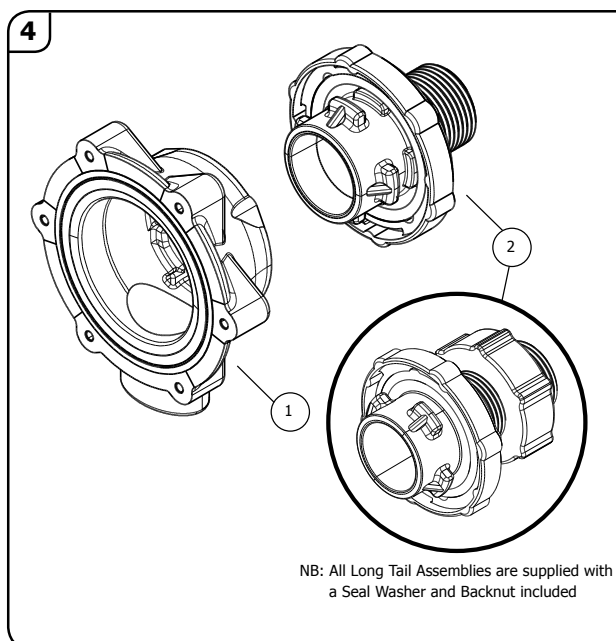
| CODE | DESCRIPTION |
|------|-------------------------------|
| 1 | TPPC1055 55mm Compact Float |
| 2 | TPP1020 Wing Bolt |
| 3 | TPP1030 Extension Arm |
| 4 | TPP1040 Bolt M5 x 12 Pan Slot |
| 5 | TPP1050 Extension Slide |
| 6 | TPPC1065 25mm Extension Arm |



| CODE | DESCRIPTION |
|------|-------------------------------|
| 1 | TPPC2011 Actuator Cap |
| 2 | TPP2020 6g x 10 S/S Screw |
| 3 | TPP2030 Frost Pro Plug |
| 4 | TPP2040 Frost Pro O'ring |
| 5 | TPP2050 Valve Cap Assembly |
| 6 | TPP2080 Bearings (set of two) |
| 7 | TPP2090 Actuator Arm |
| 8 | TPP2100 6g x 25 S/S Screw |



| CODE | DESCRIPTION |
|------|------------------------------------|
| 1 | TPP3 Diaphragm Assembly |
| 2 | TPP3010 Pilot Flow Filter (Fine) |
| | TPP3011 Pilot Flow Filter (Coarse) |



| CODE | DESCRIPTION |
|----------|------------------------------------|
| 1 | DTP1 Detach Base |
| 2 | BSP Tails |
| | Short Tail Assembly (BSP) |
| DTP020 | Detach Tail 20mm(3/4") Short |
| DTP025 | Detach Tail 25mm(1") Short |
| DTP032 | Detach Tail 32mm(1 1/4") Short |
| | Long Tail Assembly (BSP) |
| DTP015L | Detach Tail 15mm (1/2") Long |
| DTP020L | Detach Tail 20mm (3/4") Long |
| DTP025L | Detach Tail 25mm (1" bsp) Long |
| DTP032L | Detach Tail 32mm (1 1/4" bsp) Long |
| | NPT Tails |
| | Short Tail Assembly (NPT) |
| DTP0075 | Detach Tail 3/4" npt |
| DTP0100 | Detach Tail 1" npt |
| DTP0125 | Detach Tail 1 1/4" npt |
| | Long Tail Assembly (NPT) |
| DTP0050L | Detach Tail 1/2" npt Long |
| DTP0075L | Detach Tail 3/4" npt Long |
| DTP0100L | Detach Tail 1" npt Long |
| DTP0125L | Detach Tail 1 1/4" npt Long |

NB: All Long Tail Assemblies are supplied with a Seal Washer and Backnut included